

# Fuel View

Site-wide fuel control and reporting for fuel pumps, EV chargers, storage tanks, vehicle GPS and telematics



Fuel View At-A-Glance, Department At-A-Glance, and Terminal Status Screens

Fuel View is the industry's most versatile and comprehensive tool for fleet-wide fuel management and control. Monitor key performance indicators and implement validation rules on fuel management and vehicle usage, for comprehensive transaction records for vehicles, drivers, and pumps. Automate and control fuel access, data collection, tank level monitoring, and site reporting.

User-friendly, SaaS or local browser-based interface allows for adding, modifying, and removing asset and employee information. Templates provide faster data entry, reduced entry error, and reporting consistency. Business intelligence based reporting and query functionality provides detailed, decision-making data.

Multiple At-A-Glance screens, group-level reports, pre-configured or easily customizable data fields, and audit trails ensure total accountability, all in near real time.



Manage fuel and vehicle fluids in real-time. Oversee your entire fleet's fuel status from anywhere.



Fuel View SaaS will interface directly with EV chargers that have OCPP v1.6.

OCPP compliant data availability is based on individual charger manufacture outputs.

## KEY VALUES

- Lower and manage operating costs throughout your fleet
- Automate access to fueling and accounts with absolute certainty every drop of fuel goes into the identified vehicle
- Decrease response time with customizable alerts and alarms for fuel transactions, vehicle usage, and storage tank levels
- Detailed insight to the status of sites, overall fleet and individual vehicles with At-A-Glance screens and reports
- Faster, more accurate fleet analysis with pre-programmed, complex datasets to print, share, or export
- Enterprise Class .Net scalable, web-based application



See the Ward Capabilities Brochure for more product offerings.

## KEY FEATURES

- Minimal need for software support
- Global record updates
- Multi-level, role-based security
- Reports allow grouping up to 10 levels

## Security

Completely customizable security features. Define user access levels to assets by division or location; specify levels in any configuration or combination.

- ✓ User authentication integrated with Active Directory
- ✓ User-friendly browser based SSL interface
- ✓ User-specific password roles (manager, operator, analyst, etc.)

## Data Query Reporting

Advanced query functions enable analysts to quickly generate customized reports without having to search through lengthy files and records. Fuel View provides the most timely, accurate, and reliable data reporting available.

## Interfaces

Fuel View integration options:

- ✓ Fleet Management
- ✓ GPS/AVL
- ✓ HR
- ✓ Security
- ✓ Accounting

**i** Options run from flat file exports to complete web services database level exchange API's.

## Database

- ✓ Database support for Microsoft SQL and Oracle
- ✓ Database core structure has been preserved so current customers will not lose their custom integrations (exports, 3rd party reporting, etc.)
- ✓ Easily up-gradable

## Contact

[www.ejward.com/contact](http://www.ejward.com/contact)



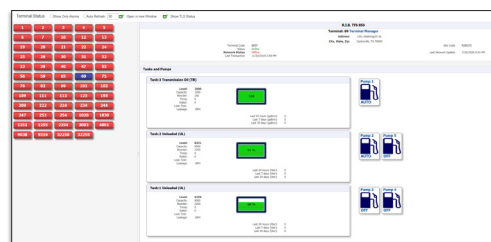
Vehicle-At-A-Glance Screen (Location requires optional GPS device)

This screenshot displays the 'User Defined Alert Settings' form. It contains several sections for configuring alerts, such as 'Time Difference for Vehicle', 'Transaction Time Difference for Employee', 'Hourmeter changes by Vehicle', and 'Processing Errors'. Each section has input fields for setting specific thresholds (e.g., minutes, hours, distance) and checkboxes for enabling or disabling alerts.

User Defined Alert Settings

The screenshot shows a 'City of Ward Fuel Adjustments' report. It is a table with columns for Site Name, Tank Number, Product, Time, New Level, Old Level, Units, and Adjustment Type. The report lists fuel transactions for various sites, including 'Waste Management Center' and 'City of Ward'.

Customizable Detailed Reports



Terminal (FCT) and Pump Status