

# IoT Fuel Control Terminal

Real-time communication, control, and security

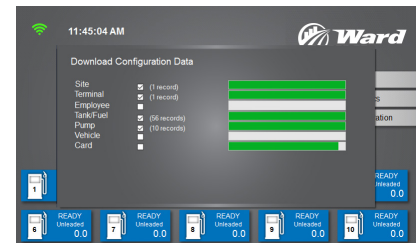
## NEW FEATURES

- REST based API for robust security, communication, and scalability
- Intel™ Dual Core Processor
- Real-time pump and tank status, transactions, alerts
- Remote fueling authorization
- Remote diagnostics, updates, restart
- EV charging station compatibility
- Custom fueling scripts
- Extensible framework ensures future technologies compatibility
- Self registering for plug and play installation
- Instant or user controlled update timing
- Durable powder coat finish

## AND STILL DELIVERS:

- 100% secure user accountability
- Fast, automated fueling access
- Controls multiple fuel and fluid hoses
- Broadcast or targeted messaging

\* See the Ward Brochure for our Solutions Overview.



IoT FCT and Status Screens

With Ward's **Internet of Things Fuel Control Terminal** you are always connected. The IoT FCT communicates in real-time is fully integrated and synchronized with Ward's W4 Fuel View software.


New, data rich display screens include fuel dispensing volumes, and pump status indicators. The IoT FCT allows instant remote fueling authorizations, diagnostics and updates, as well as increased memory and storage capacity. Standard authorization methods are fully

automated and 100% secure using Ward CANceiver™, Fuel Tag and Hose Module, or other access methods.

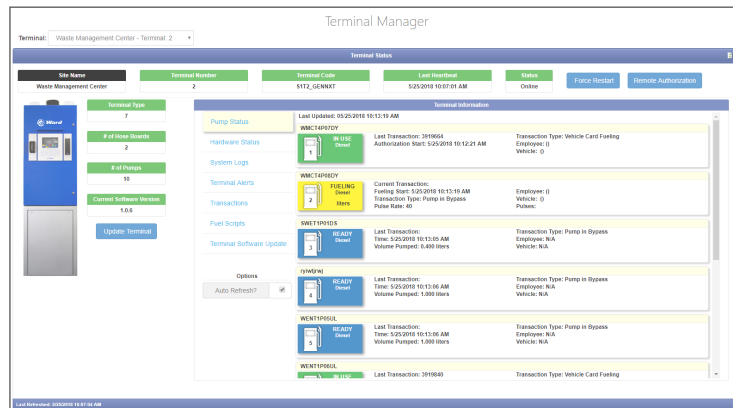
The IoT FCT interfaces with gasoline, diesel, CNG, propane, and any other fuel and fluid dispensing device, and electric vehicle charging stations; controlling up to ten fuel pumps or other fluid dispensers.

Industrial grade components and powder coat finish withstand the harshest environments, providing dependable performance.

# Specifications - IoT Fuel Control Terminal

<b>Communication Options</b>	REST based API; HTTPS/SSL; Cat5/6 - TCP/IP; Wi-Fi; hard wire; cellular 3G / 4G - <i>optional data plans available direct from Ward</i>		
<b>Operating System</b>	Windows 10 IoT Enterprise; Intel® E827 Atom™ Processor		
<b>Memory Processor</b>	4 Gb RAM Intel® Atom™ E3827 dual core; 1.75 GHz core speed		
<b>Storage</b>	64 Gb industrial grade mSata SSD ( <i>upgradeable</i> ) <i>Optional TPM 2.0 security for enhanced storage encryption</i>		
<b>Power</b>	120 / 240 VAC; less than 2 Amps total current SBC battery back up and line conditioning		
<b>Display</b>	7 inch graphic display screen (800 x 480 pixels) Readability in any light; automatic night light QWERTY keypad		
<b>Temperature Range</b>	-40°C to 85°C industrial rated components		
<b>Dimensions*</b>	Island mount	20.5 x 12 x 64 in (52 x 31 x 163 cm) W x D x H	
	Pedestal mount	20.5 x 12 x 38 in (52 x 31 x 97 cm) W x D x H; 60 lbs	
<b>Certification</b>	 UL 1238 and CSA C22.2		

\* Dimensions may vary slightly.



W4 Fuel View software - Real-time pump status  
IoT FCT Terminal Manager Status screen



E.J. Ward, Inc.  
8620 N. New Braunfels #200 N  
San Antonio, TX 78217  
210.824.7383 | 800.580.WARD  
info@ejward.com • www.ejward.com